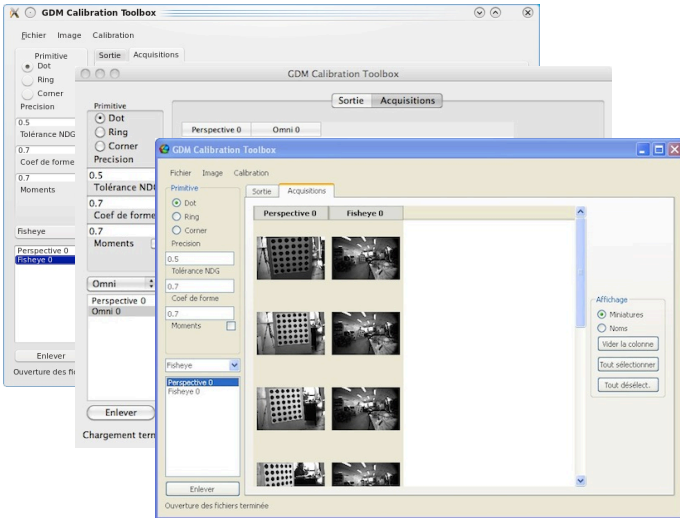


Calibration Software Technical Note

Guillaume Caron, Damien Eynard

guillaume.caron@u-picardie.fr, damien.eyn@gmail.com

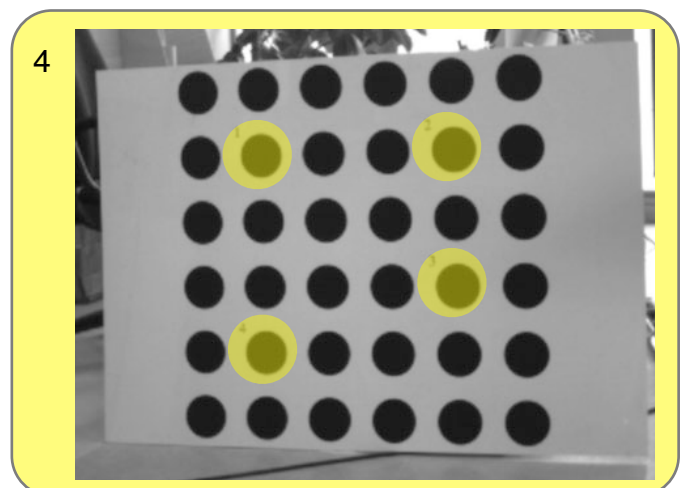
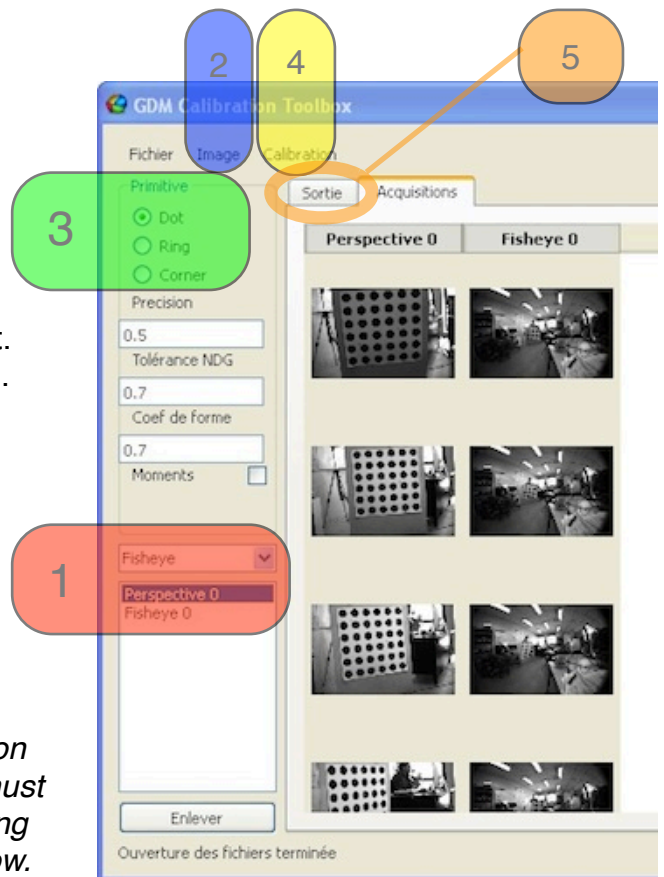


This software is a cross platform application for hybrid stereo calibration and can run under Windows, Linux and Mac OS X.

It has been tested under Xp, Seven, Mac OS10.6 and Ubuntu 9.04.

How to

1. First add a camera model to the combo list and select this item.
2. After having selected the model, add an image list. Repeat 1. and 2. for each model of camera to add.
3. Select the type of feature.
Note: for advanced user, check the parameters of the file «parametresMireX.txt» to set size of the pattern and the click order. X corresponds to the feature (0 dots, 1 corner, 2 ring).
4. Calibrate the system
A list of images will be displayed.
Note: Please verify these images are fully visible on the whole screen. During calibration, all images must be 'clicked': this version of program can't exit during calibration. Please see the sequence of click bellow.
5. Once selection is made in all images and calibration over, results are displayed on the first tab called 'out' or 'sortie' in the french version.



Sequence of clicks for 'dot' patterns